

# Xerox FreeFlow Print Manager

Access your printers  
from a single point.



# Get unprecedented control of your entire workflow.

**Simplification leads to success.** Xerox FreeFlow Print Manager increases your productivity, shortens turnaround times, reduces errors, and enables new revenue opportunities by integrating your print management and job ticketing processes into one, ultra-productive workflow.

## See the big picture.

View or modify full-production printing-job specifications. Monitor print queues to check jobs in progress for greater control. And automatically query all your printers for job attribute matching to prevent interruptions to your workflow. With Print Manager, you can do it all quickly and easily.

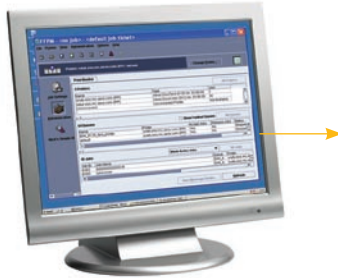
## Job ticketing made easy.

Print Manager offers Job Definition Format (JDF) and Job Messaging Format (JMF) capabilities to facilitate your production-level needs. You can even save job tickets in Xerox production printing or JDF format to integrate all of your Xerox printers into your workflow and simplify your reprint processes.

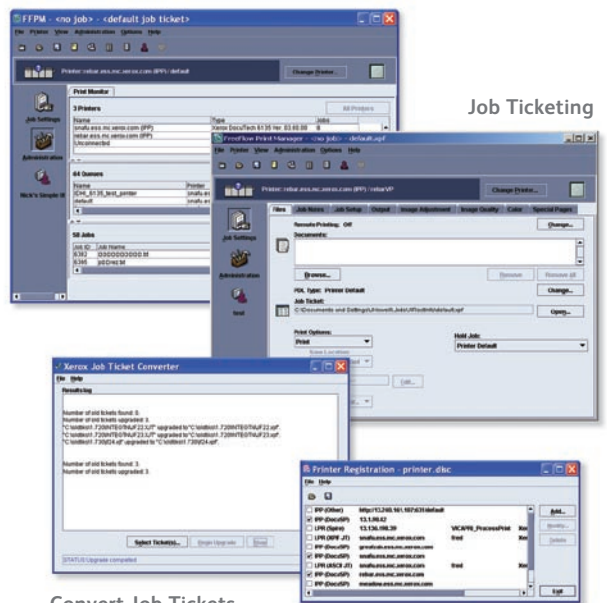
## You're in complete control.

Whether you have a strictly digital operation or a mix of offset and digital equipment, FreeFlow Print Manager gives you a single point of control for your workflow. You can direct jobs to the most appropriate printer, simplify job programming, quickly train operators, reprint with little or no job ticketing, develop custom GUIs, and more. You'll reap the rewards in higher productivity and profitability.

Remotely Program, View, and Monitor Jobs and Printers



Control Printer, Queue, and Job Status



Job Ticketing

### Go digital from anywhere

- Offset prepress software
- Digital workflow products
  - FreeFlow Web Services, Process Manager™, and Output Manager™

Convert Job Tickets

Select and Register Printers

**Develop custom GUIs** to meet the unique requirements of your operation and match the skill level of your operators.

**Save job tickets** in Xerox production printing or JDF format to integrate all of your Xerox printers into your workflow and simplify your demand reprint workflow.

**View and specify full production printing job attributes**, including covers, inserts, and mixed media, quickly and easily – with less potential for error.

**Monitor print queues** to check jobs in process for greater overall control of your workflow.



### Print Production Versatility

With Print Manager, control of over 40 Xerox digital production printers is at your fingertips, including:

- Xerox Nuvera® Digital Production Systems
- iGen3® and iGen4® Digital Production Presses
- DocuColor® Production Printers
- DocuTech® Production Publishers
- DocuPrint® Production Printers
- Continuous Feed Printers

### Automatically query print systems

for capabilities to ensure job ticket compatibility and prevent interruptions to your workflow.

### Reduce job programming complexity

and build consistency by using the same processes for all Print Manager-supported printers.

## FreeFlow Print Manager gives you a single, consolidated view of your workflow – and so much more.

Access, streamline, leverage, and integrate your workflow with FreeFlow Print Manager and do more jobs, more efficiently.

**Integrate digital and offset workflows** seamlessly to enable late-stage digital or offset run decision making and cost-efficient print production.

**Increase workflow efficiency** by accessing all of your digital printers from a single point to enable job submission and reprints from virtually anywhere in the world.

**Create new revenue opportunities** with a streamlined workflow and fast, easy, and accurate reprints.

**Support a wide range of formats**, including the industry-standard Job Definition Format (JDF) and Job Messaging Format (JMF).

Print Manager combines with other FreeFlow products like Makeready, Output Manager, Print Server, Process Manager, VI Suite, and Web Services to deliver scalable production workflow solutions specifically tailored to your unique needs.

# Fewer touches. Greater productivity.

**When jobs can go quickly and automatically from submission to printing to finishing to shipping, your productivity and profitability can soar.** It comes down to more jobs in, more jobs out, for a greater return on your investment. The Xerox FreeFlow Digital Workflow Collection can help you automate to save time and reduce costs for every job, from point of entry to final delivery.

Orders come in through your current system or the 24/7 Web portal enabled through **FreeFlow Web Services**, powered by Press-sense™.

Immediately, they're processed through **FreeFlow Process Manager™**, which automatically handles preflight, imposition, scripting, and more.

**FreeFlow Print Manager** takes care of job ticketing and tracking – it can even integrate with your offset prepress systems.

Jobs can also be prepared with our document preparation software, which allows you to view and prepare jobs for printing – **FreeFlow Express to Print** uses templates for ease and simplicity while **FreeFlow Makeready®** puts advanced capabilities at your fingertips.

Now, **FreeFlow Output Manager™** takes over, acting as a centralised collection point to route and schedule jobs across multiple printers.

Finally, the **FreeFlow Print Server** RIPs the jobs, providing timesaving efficiency, excellent image quality, and benchmark security.

Looking to gain a competitive edge? Use the **FreeFlow Variable Information Suite** to add personalisation and cost-effective security features to your documents.

The bottom line? Whether you use one of these products or integrate several to meet your specific workflow needs, you can connect with your customers, reduce costs, and enable new applications.

## Xerox® FreeFlow® Print Manager Specifications

### Software

#### FreeFlow® Print Manager includes:

- Print Manager (single user license)
- Printer Registration
- Xerox® Job Ticket Converter

### Minimum System Requirements

#### PC Workstations:

- Microsoft® Windows Vista®, Windows® XP SP3, and Windows® Server 2003 operating system
- Intel® Pentium® 4
- 1.7 GHz processor or greater
- 512 MB RAM
- 20 MB available disk space
- CD-ROM drive
- Internet Explorer® version 5.5 or higher

For more information on Xerox® FreeFlow® Print Manager, call 800 787 787 or visit us on the Web at [www.xerox.com/freeflow](http://www.xerox.com/freeflow).



© 2008 Xerox Corporation. All rights reserved. Xerox®, the sphere of connectivity design, DocuColor®, DocuPrint®, DocuTech®, FreeFlow®, FreeFlow Makeready®, FreeFlow Output Manager™, FreeFlow Process Manager™, iGen3®, iGen4® and Xerox Nuvera® are trademarks of or licensed to Xerox Corporation in the United States and/or other countries. Intel® and Pentium® are trademarks of Intel Corp. Internet Explorer®, Microsoft®, Windows®, and Windows Vista® are registered trademarks of Microsoft Corporation. Netscape® is a trademark of Netscape Communications Corporation. Press-sense™ is a trademark of Press-sense Ltd. 09/08