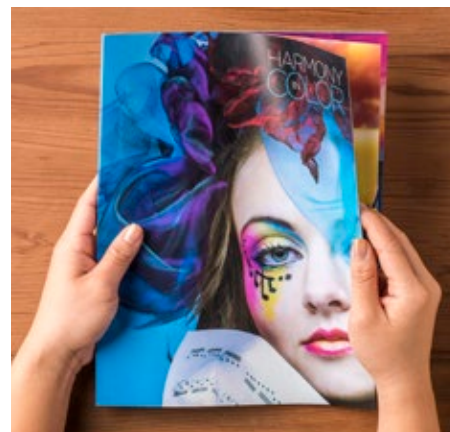


Xerox® SquareFold® Trimmer Module

XEROX® SQUAREFOLD®
TRIMMER MODULE

Expand your Xerox® Production Family with finishing options to produce a more professional look.



The SquareFold Trimmer Module enhances the power of your finisher with highly desired features, such as square folding and face trimming to produce high-value brochures and booklets. This standalone module can be added on to any existing Xerox® Colour 800i/1000i Presses, Xerox® Versant® Family of Presses, Xerox® D Series Copier/Printer, Xerox® D Series Printer or Xerox® Colour C60/C70 Printer, providing greater finishing versatility and increased productivity.

FEATURES

- Inline square fold and face trim
- SquareFold Trimmer Module attaches neatly to the end of the optional booklet maker finisher
- Easy setup from print server or printer user interface allows the user to control the amount of trim and thickness of the square fold
- Inline face trimming eliminates paper shingling at the fore edge of booklets
- Accurate face trim settings yield sharp, crisp results
- Booklets can be opened flat without damaging the spine
- Creasing roller technology creases the cover and innermost sheets of the booklet, minimising image cracking on the fold line
- Write and image on the square fold spine

BENEFITS

- Gives documents a more professional, finished look
- Produce professional square fold booklets quickly and easily
- Flat booklets are easy to handle, stack, pack, move and store
- Accepts booklets up to 25 folded sheets (or 100 imposed pages) directly from the finisher
- Ideal for inline production of a wide range of applications, such as brochures, catalogues, calendars, photo books, educational and training materials and more!

Xerox® SquareFold® Trimmer Module

XEROX® SQUAREFOLD®
TRIMMER MODULE

Expand your Xerox® Production Family with finishing options to produce a more professional look.

Power Requirements

- 100 – 240 VAC
- 60/50 Hz
- KVA Rating: 0.1 KVA

Dimensions

- 42 in. (1,066.3 mm) width
- 28.5 in. (723.9 mm) depth
- 22 in. (558.8 mm) height

Weight

- 209 lb (95 kg)

Paper Types

- Coated and uncoated

Paper Weights

Xerox® Colour 800i/1000i Presses

- 15 lb Bond – 130 lb Cover (52 – 350 gsm)

Xerox® Versant® 3100 Press

- 15 lb Bond – 130 lb Cover (52 – 350 gsm)

Xerox® Versant® 180 Press

- 15 lb Bond – 130 lb Cover (52 – 350 gsm)

Xerox® D Series Copier/Printer and

Xerox® D Series Printer

- 18 lb Bond – 110 lb Cover (64 – 300 gsm)

Xerox® Colour C60/C70 Printer

- 18 lb Bond – 110 lb Cover (64 – 300 gsm)

Paper Size (min/max)

- 8.5 x 11 in. SEF
(216 x 279 mm) – minimum
- 13 x 18 in.
(330 x 457 mm) – maximum

Trim Capacity (min/max)

- 5 – 20-sheet booklet (up to 80 imaged sides) at 24 lb (90 gsm)
- 5 – 25-sheet booklet (up to 100 imaged sides) at 20 lb (80 gsm)

Cut Amount

- 2 – 20 mm, adjustable in
0.1 mm increments



Xerox® Colour 800i/1000i Press



Xerox® Versant® 3100 Press



Xerox® D Series Copier/Printer



Xerox® D Series Printer



Xerox® Versant® 180 Press



Xerox® Colour C60/C70 Printer

Note: The Xerox® SquareFold Trimmer Module requires the Booklet Maker Finisher and can be used with any of the print servers for the Xerox® Colour 800i/1000i Presses, Xerox® Versant® Family of Presses, Xerox® D Series Copier/Printer or Xerox® D Series Printer and the Xerox® Colour C60/C70 Printer.

For more information on the Xerox® SquareFold® Trimmer Module, contact your Xerox representative, call 1-800-ASK-XEROX or visit us at www.xerox.com.