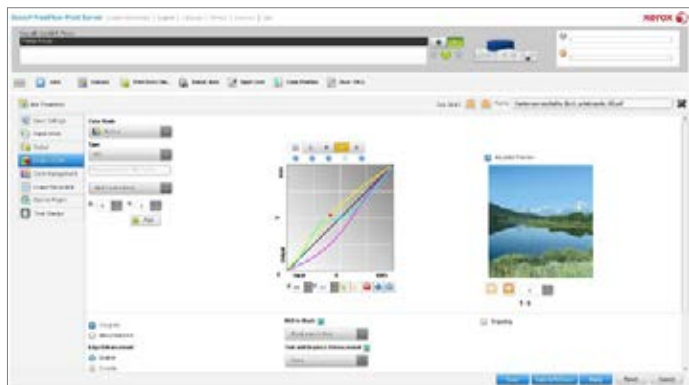


Xerox® FreeFlow® Print Server for the Xerox® iGen® 5 Press, Now Powered by Windows®

The image quality, performance and productivity that is the hallmark of the Xerox® FreeFlow Print Server is now available on a Microsoft® Windows platform. You can always count on production-class robustness and reliability; now with Windows, you have enhanced ease of use and supportability. And the Adobe® PDF Print Engine® delivers optimal image rendering for all your application needs.



Take image quality to the next level.

Take full advantage of the vibrant iGen 5 fifth colour with optimised extended colour controls, including the expanded FreeFlow Print Server spot colour manager. Keep your colour consistent with fast calibration and advanced profiling. And with one-button ease, you can colour match CMYK and RGB. Advanced patented image quality capabilities optimise your output.

Be confident your PDF files print accurately.

The Xerox® FreeFlow Print Server with the Adobe PDF Print Engine delivers a powerful, predictable and consistent workflow from creative through prepress and production. By processing PDF files natively, you eliminate problems associated with conversion. Special graphic effects all print as expected.

Productivity meets ease of use.

The FreeFlow Print Server's enhanced parallel RIP technology delivers optimal performance for your most demanding print applications, while the new Web UI allows management of your production environment from anywhere, on any device, using standard browsers. This is the perfect blend of power and simplicity.

Xerox® FreeFlow® Print Server for the Xerox® iGen® 5 Press, Now Powered by Windows®

Hardware/Platform

- DELL™ PowerEdge™ T630 Tower Chassis
- Processor Type: 2x Intel® Xeon® E5-2687W V3, 3.1 GHz, 25M Cache
- Hard Drive: 4 x 1.2TB 10K RPM
- Memory: 64GB
- Operating System: Windows 7 Embedded
- Ports: 3 x USB 3.0, 5 x USB 2.0, 1 serial
- 10/100/1000 BaseT Ethernet Ports
- Display: 22" Wide Screen
- Dual Layer DVD +/- RW/CD RW

ConfidentColour Technology

- Extended Gamut modes, including support for fifth colour (orange, green or blue)
- 100% CMYK High Resolution Enhancement
- ICC and DeviceLink workflow support
- Advanced Profiling – optimised profiling target (patent pending) provides High Accuracy Printer Model
- Rendering Intent Programming by colour space and object type
- Optimised RGB and Spot Colour Emulation
- PANTONE® Plus licensed and spot-colour matching
- PANTONE Goe™ support
- New RGB Rendering for digital photo printing
- Key colour emulations such as GRACoL®, SWOP®, Euroscale, Fogra, Japan Color and ECI
- Tone Reproduction Curve (TRC) Editor
- In-RIP trapping, anti-aliasing, overprinting and selectable halftones
- Intuitive spot colour editor for spot colour matching
- Absolute Rendering produces more accurate CGATS E results

Client and Remote Support

- Choice of print drivers
 - Support for Xerox® Global Print Driver®
 - Xerox® fully featured print drivers
 - Microsoft® Windows Client OS: Vista, 7, 8, 8.1
 - Windows Server® 2008, 2012 and 10 Technical Preview
 - Apple® Mac OS®: 10.8 and higher
- Adobe® PostScript® Printer Descriptions (PPD)
- HTTP and HTTPS browser submission support
- IPP for job submission and system status
- Support of IPv4 and IPv6 (dual mode supported)
- Native JDF/JMF support

Productivity and Workflow

- Web UI allows management of multiple print engines from anywhere, on any device
- Adobe PDF Print Engine® version 3.6
- Xerox® Print Drivers
- Extensive job management capabilities at page, job and queue levels
- Thumbnail Preview
- Layout/Imposition Standard
- File Submissions
 - Hot Folder
 - Hot Drop to Web UI
 - Upload from Web UI
 - USB walkup
- Page Exception Programming
- Preflight, preview and soft proof for job accuracy
- JDF job ticket support
- FreeFlow Discovery feature allows administrators to find and manage remote printers

Variable Data Printing

- Xerox® FreeFlow® VI Suite option
- Native PPML
- PDF/VT support

File Format Support

- Adobe PostScript Level 1, 2, 3
- Adobe Acrobat® 9.0, PDF 1.8, PDF/X, XPS
- TIFF, EPS, JPEG, PPML
- Native JDF/JMF Gateway
- Adobe PDF Print Engine 3.6
- Microsoft Word and PowerPoint® document conversion

Includes Adobe PDF Converter SDK
Includes Adobe PDF Print Engine
Includes Adobe PostScript Fonts
Includes Adobe PDF Library
Includes Adobe Japanese Fonts

Network Environment/Protocols

- TCP/IP, IPP
- DHCP Single IP
- SNMP MIB II support for third-party administration tools

Security Features

- Microsoft Security Guidelines
- Two security profile modes and levels
- Encrypted job submission modes
- Secure Print Mode (restricts page reprints)
- Address Access Filtering
- Strong password support
- Data Overwrite (on demand)
 - STIG compliance
 - FIPS 140-2
 - 802.1x
 - SNMP v3
 - SSL V1, SSL V3
 - IPsec support
 - IPv6 compliance
 - SSL signed certificate

Dimensions/Weight

- Print Server
 - Height: 44 cm
 - Width: 30 cm
 - Depth: 71 cm
 - Weight: 47.4 kg

Optional Stand

- Height: 31 cm
- Width: 47 cm
- Depth: 71 cm

Power

- Voltage: 6 A at 220 VAC
- Power: 1100 W

Regulatory Agency Approval

Meets or exceeds the following requirements:

- Safety – UL 1950, CSA C22.2 No. 950, TUV EN 60950
- RFI/EMI – FCC Class A, DOC Class A, EN55022 Class A, EN 61000-3-2
- Immunity – EN50082-1
- CE Mark