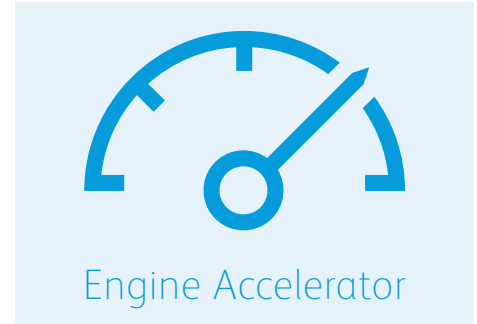
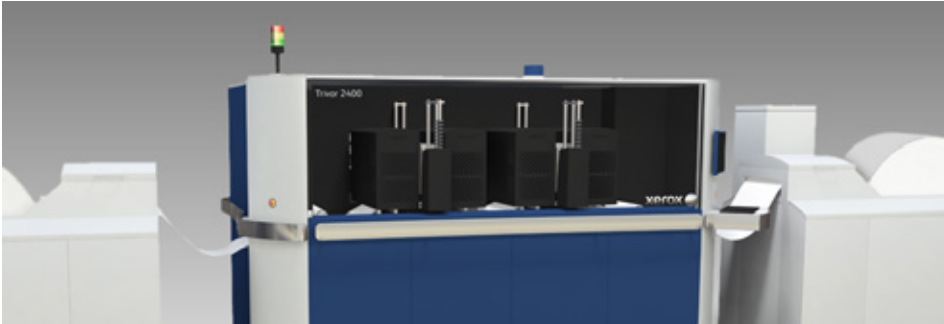


# Accelerate Your Xerox® Trivor® 2400 Inkjet Press with Xerox® FreeFlow® Core

XEROX® FREEFLOW® CORE



When you're printing high volume, even small print file issues can cause major slowdowns—nullifying the high-speed advantage gained with your Trivor 2400. With FreeFlow Core, files are preconditioned and optimized to print faster, imposition time is reduced and control marks and barcodes are automatically inserted. It's your essential tool for maximizing profit potential.

#### THE TRIVOR 2400: THE NEXT LEVEL IN 20-INCH CONTINUOUS FEED PERFORMANCE

As the highest performing small-footprint production inkjet system on the market today, the Trivor 2400 provides the speeds and flexibility you need to run higher-value applications economically. When paired with FreeFlow Core, you'll widen profit margins by dramatically reducing imposition and other preflight operation times, ensuring files are ready to print, optimized for color and economy, and laying the groundwork for precise finishing.

#### XEROX® FREEFLOW CORE: EASY, AUTOMATED FUNCTIONALITY TO FIT YOUR NEEDS

FreeFlow Core delivers a modular, integrated toolset to automate and simplify the production process. On its own, this powerful, scalable software suite helps you get jobs in, prepped, printed and finished faster and with fewer manual operations. On your Trivor 2400, FreeFlow Core will simplify complex imposition and layouts, replace multiple templates with easy workflows, automatically maximize roll size, press utilization and more. You'll accelerate both production and profit.

#### STREAMLINE AND AUTOMATE. PREPARE, PRINT AND FINISH MORE JOBS IN LESS TIME.

Together, Trivor and FreeFlow Core provide your operation a powerful and profit-boosting production solution capable of trimming overhead costs and reducing job turnaround time. Time- and step-saving workflows, intelligent book layouts, ability to store and print forms automatically, and all the tools you need will take the wasted time, materials and guesswork out of even the most complex jobs. You're faster, more productive and more marketable.

84% 

Print providers who say  
reducing waste and  
increasing efficiency are  
strategic goals.\*

\*InfoTrends, 2017

# Accelerate Your Xerox® Trivor® 2400 Inkjet Press with Xerox® FreeFlow® Core

XEROX® FREEFLOW® CORE

The three challenges the Xerox® Trivor® 2400 Inkjet Press and Xerox® FreeFlow® Core solve together.

## 1. CONFIRMING FILES ARE SPEED- AND INKJET-READY



There's nothing like an oversized image or a missing font to slow down your print engine on a critical high-volume run. FreeFlow Core conducts a complete quality check—and provides fixes—to precondition files and ensure they're ready to print and finish to exact specifications.

Program different checks for different applications—and set quality tolerances for every type of job. Add high-value color marketing messages to transactional jobs with maximum efficiency, and ensure images in your direct mail jobs look their best. Every job or job type, optimized according to the way you work.

## 2. TIME-CONSUMING MANUAL OR TEMPLATE-BASED IMPOSITION



Even with books or complex direct mail pieces containing multiple elements of different sizes and orientations, FreeFlow Core makes imposition easy and automatic. Rather than working with and managing hundreds of templates, and the resulting potential for error, rules-based imposition from FreeFlow Core lets you automate all your book layouts with a single workflow.

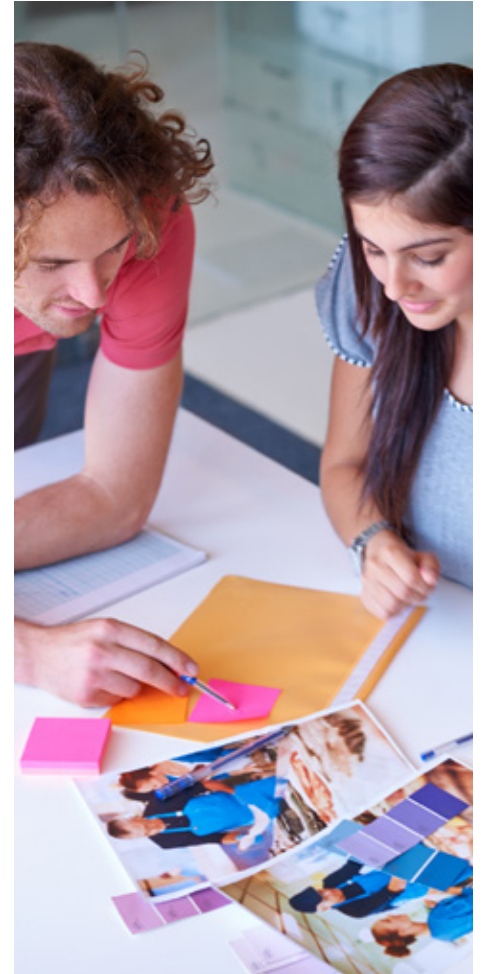
FreeFlow Core saves time and eliminates potential error by calculating optimal imposition based on rules you provide—and storing the settings for similar jobs in the future. If your print environment includes both cut-sheet and roll-fed print engines, FreeFlow Core and its ability to eliminate the need for multiple templates is a critical benefit.

## 3. AUTOMATING INLINE AND OFFLINE FINISHING



Add FreeFlow Core, and it doesn't matter if designers know or understand your finishing devices. You won't lose time in preparation because FreeFlow Core helps finish documents to any specification by automatically adding complex instructions to the roll—even on the fly. Rather than relying on templates, FreeFlow Core and its rules-based architecture ensures finishing devices are utilized at maximum efficiency.

Whether you're finishing inline or offline with multiple devices, you'll gain speed and efficiency with complete instructions for cutting, perforations, folds and other finishing operations embedded in your print run.



## Want to learn more?

Find more information or download a free trial of Xerox® FreeFlow® Core at [www.xerox.com/automate](http://www.xerox.com/automate).

Learn more about workflow solutions from Xerox at [xerox.com/workflow](http://xerox.com/workflow).

Talk to Xerox engineers about how FreeFlow® Core works at [xerox.com/coreforum](http://xerox.com/coreforum).

Read and download more about the Xerox® Trivor® 2400 Press at [xerox.com/trivor](http://xerox.com/trivor).