

Process Manager:

**Do more in less time.
Automatically.**



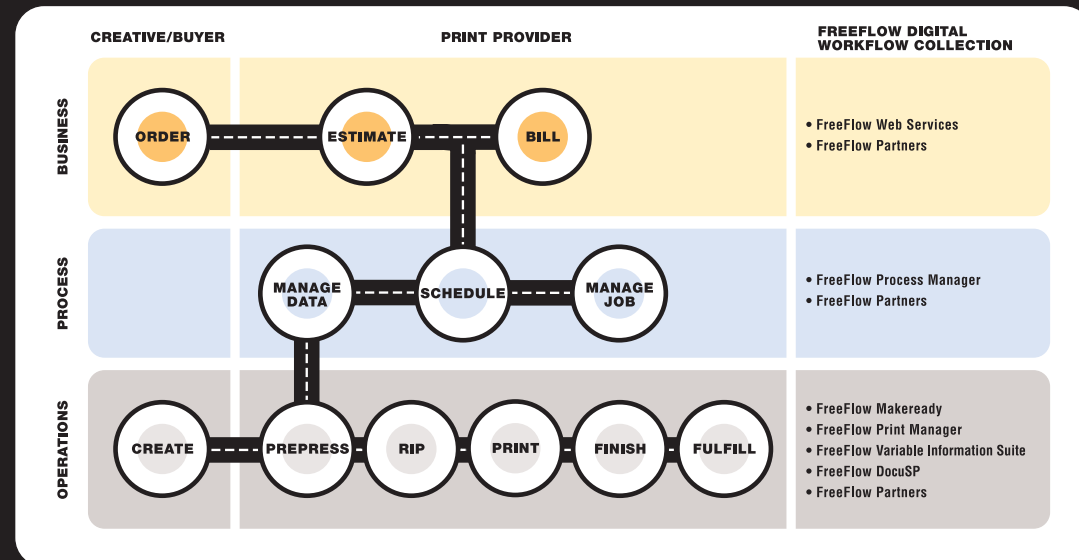
Xerox FreeFlow™

Performance Accelerated.

Print service providers in all markets, as well as in-plants, are under constant pressure to reinvent their processes, operations, and offerings. It's a competitive world out there and you've got to be faster, better, and more responsive to your customers if you're going to come out on top. But how are you going to:

- Streamline disconnected work processes
- Automate many labor-intensive, repetitive steps
- Update existing systems and applications
- Take advantage of new digital printing technologies
- Answer the call for faster, shorter runs of the highest quality documents.

Workflow can be thought of as the process of managing print production jobs from creation through invoice. Whether you're in an offset environment, digital, or some combination, workflow is everything you're doing right now to move jobs through your enterprise. Xerox FreeFlow solutions streamline your workflow and offer true interoperability among systems, applications, and printers so you can work the way you've always worked—only better.



FreeFlow is a platform that enables our customers to realize the vision of the "New Business of Printing." FreeFlow is built on industry leading *products*, complemented by business *partner* products, based on open industry *standards* and implemented with *services*.

PRODUCTS. PARTNERS. STANDARDS. SERVICES.

FreeFlow is based on four key elements:

PRODUCTS

A growing collection of Xerox software and hardware solutions that impact and improve nearly every aspect of workflow in the print production space.

PARTNERS

100+ industry leaders that collaborate with Xerox to provide solutions optimized for and fully integrated into the FreeFlow architecture.

STANDARDS

Open, industry-based standards, such as JDF, PDF, and XML that ensure interoperability and compatibility of FreeFlow products with existing workflows and equipment.

SERVICES

Workflow assessment, systems integration, application programming support, color management, and business development to support your workflow initiatives.

FREEFLOW PRODUCTS:

WEB SERVICES | MAKEREADY | **PROCESS MANAGER** | PRINT MANAGER | VARIABLE INFORMATION SUITE | DOCUSP®

Make it more automatic

As the number of print on demand jobs increases and the time you have to complete them shrinks, you're under constant pressure to find solutions that can streamline your prepress activities. Wouldn't it be great if you could eliminate most of your manual prepress operations? After all, no matter what the job is or how many there are, your operators have to perform the same tasks over and over again.



Now, there's a better way.

FreeFlow Process Manager automates your repetitive prepress activities and increases the overall efficiency of your workflow. With FreeFlow Process Manager, workflows are created with the most commonly repeated tasks. Those tasks can then be configured for different applications workflows. And if modifications to a workflow process are necessary, they're made quickly and easily.

At last, an automated solution that can streamline your repetitive prepress activities and let you get more done in less time.

AUTOMATION MAKES IT FASTER

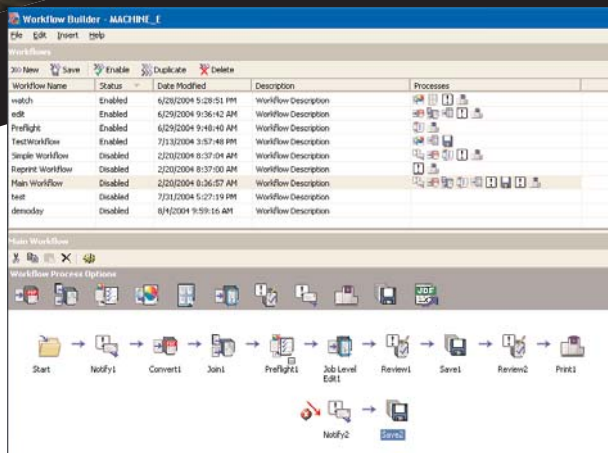
- Perform routine tasks faster.
- Process more jobs in less time and with fewer mistakes.
- Prevent operators from having to repeatedly perform complex tasks.
- Maintain consistency and high quality across all similar jobs.
- Enable JDF process management.



Automation... makes it easier

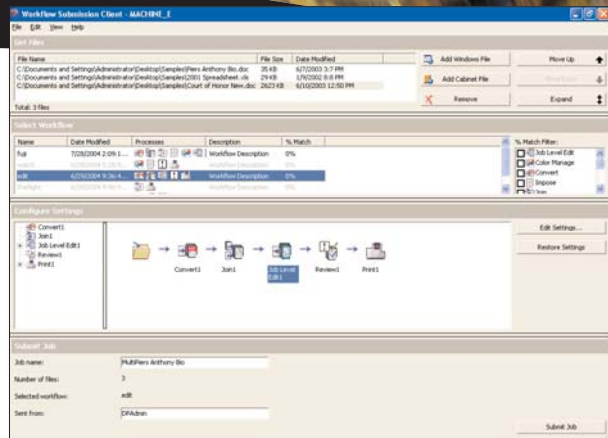
DRAG AND DROP FUNCTIONALITY

An intuitive Graphic User Interface (GUI) makes building and leveraging workflows fast and easy.



1 Set up workflow with the Workflow Builder to define and automate workflows for different applications.

2 Use the Workflow Submission Client to send files in Adobe PDF or TIFF format, or through FreeFlow Makenready or Web Services.



A BETTER, FASTER PROCESS

FreeFlow Process Manager utilizes JDF (Job Definition Format) to communicate job parameters and enable a more efficient and collaborative workflow between creative and production environments. Process Manager allows operators to pre-build workflows so documents can be automatically prepared, proofed, and printed.

A range of output options

- Output to printers
- Send the job to the Process Manager **Document Library**
- Make the job available to your customers for online ordering with **FreeFlow Web Services**
- Export the **JDF ticket**



INPUT FLEXIBILITY
Process Manager accepts PDF and TIFF files, and can receive files directly from FreeFlow Makenready or Web Services.



FREEFLOW WEB SERVICES



JDF TICKET



Automate it!

Job Submission and Status:

- Check status on all active and completed jobs
- Notify by email via SMTP

PDF Preparation:

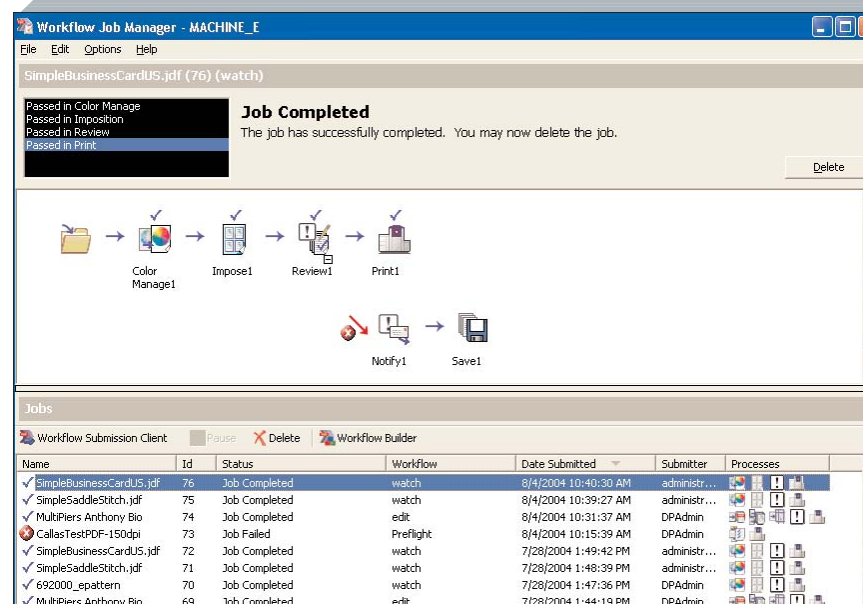
- Convert various document formats into PDF (requires PDF Conversion Option)
- Combine multiple PDF files into one PDF
- Preflight PDFs (Uses Callas Acrobat Plug-in)
- Auto-edit to include page numbers, text, watermarks, etc.

PDF Production:

- Archive PDF in Document Library
- Create JDF ticket and export PDF and ticket to the file system
- Color management
- Apply ICC color profile to PDF

PDF Review:

- Import and export JDF
- View and approve PDFs



3 Use Workflow Job Manager drag-and-drop, **JDF-enabled processing** functions to prepare the file for final production. Following PDF review, the document can be printed, sent to the document library for easy reprints, or delivered via FreeFlow Web Services.

More jobs in less time

MAKE REPETITIVE PROCESSES AUTOMATIC

Whether you're fulfilling needs for Web to print, implementing a unified offset and digital workflow, or printing books, catalogs, and manuals, FreeFlow Process Manager help you handle more jobs more efficiently. By automating your prepress activities, you can insure your job integrity, quality control, and reduce your labor and training costs. More opportunity, more jobs, reduced costs—automatically.



TECHNICAL SPECIFICATIONS

FREEFLOW PROCESS MANAGER INCLUDES:

- Process Manager software
- Workflow Builder
- Workflow Submission Client
- Workflow job Manager
- Printer Administration
- Document library
- Quick print
- Library Administration
- Batch processing
- Backup & Restore
- Printer & Job Status

FREEFLOW PROCESS MANAGER OPTIONS:

- Server PDF Conversion Services (100 user license)

SUPPORTED SERVER CONFIGURATION:

- Dell Professional Workstation 650
 - Dual 2.8GHz Intel Xeon P4-class CPUs
 - 1.5GB of RAM memory
 - Dual 36GB ATA-100 15000 RPM hard disks
 - Dell P1130 21" monitor
 - AGP graphics slot with nVidia Quadro FX500 128MB graphics controller
 - Adaptec dual-port 39160 SCSI adapter card
 - TTR5 10/20GB tape drive
 - V90 56K PCI modem
 - 1.44MB floppy disk drive
 - 48x/24x/48x CD-RW drive
 - 10Base-T/100/1.0GB Base-TX network controller
 - 5 PCI slots (3 x PCIx 64b/100MHz, 2 x 32b/33MHz)

OPERATING SYSTEM

- Microsoft Windows Server 2003 Standard Edition

Print engines to power your workflow

Print engines that can deliver the speed, image quality, reliability, and overall productivity that you need all day, every day are critical to your successful workflow. The fleet of Xerox production printers is designed to meet the challenges of your unique environment and to integrate seamlessly with FreeFlow solutions, opening doors to new opportunities and accelerating your performance like never before.

PRODUCTION COLOR

- iGen3™ Digital Production Press
- DocuColor® 8000 Digital Press
- DocuColor® 6060™ Digital Color Press
- DocuColor® 5252 Digital Color Press



PRODUCTION MONOCHROME & HIGHLIGHT COLOR

- Nuvera™ Digital Production System
- Nuvera™ Digital Copier/Printer
- DocuPrint® 92C Printer
- DocuTech® 61xx Production Publishers
- DocuPrint® Enterprise Printing System (EPS)
- DocuTech® 75/90 Publishers
- DocuPrint® 75/90 Production Printers



CONTINUOUS FEED

- DocuPrint® 425/850 Continuous Feed Printers
- DocuPrint® 500/1000 Continuous Feed Printers
- DocuPrint® 525/1050® Continuous Feed Printers



WIDE-FORMAT

MONOCHROME:

- 510 Copy System
- 6030/510 Wide Format Solutions
- 721 Copy/Print Systems

COLOR:

- 8142 Wide Format Printer
- 8160 Wide Format Printer



FreeFlow digital workflow Collection



The FreeFlow Digital Workflow Collection can be tailored to meet the unique challenges of your production print environment and streamline your workflow...



to accelerate your performance.

- **FreeFlow Web Services software** provides a Web storefront for your customers to submit new jobs and reorder existing ones in a secure environment from virtually anywhere. Jobs are quickly and easily transitioned into production or into other FreeFlow services, reducing errors and simplifying the fulfillment process.
- **FreeFlow Makeready software** streamlines your complex, labor-intensive make-ready operations with robust, sophisticated resources in a WYSIWYG environment. Makeready provides document assembly, document editing, production make-ready, and Adobe PDF review/approval.
- **FreeFlow Process Manager software** simplifies your application workflows by automating your prepress activities while providing you with the flexibility to modify workflows as needed. You maintain consistency and high quality across similar jobs, perform routine tasks, and reduce errors across the board.
- **FreeFlow Print Manager software** offers integrated print management and full job ticketing. It also provides a single point of access to all of your FreeFlow Print Manager-supported printers, as well as a highly productive demand reprint workflow, new revenue opportunities, and JDF-support.
- **FreeFlow Variable Information Suite software** gives you the power to turn variable data and images into variable documents—from colorful one-to-one marketing communications to fully formatted electronic customer statements. And because of the VIPP® variable data workflow, you can produce personalized communication and promotional transactional documents at rated speeds.
- **FreeFlow DocuSP® print controller** is an intuitive, easy-to-use digital front end that serves as a common interface to deliver productivity advantages to the entire monochrome and full-color Xerox digital printer product line.
- **FreeFlow Partner Products** are an important part of the FreeFlow Digital Workflow Collection. When you implement a FreeFlow solution, you're benefiting from all the experience and expertise of Xerox and the specialized knowledge of Xerox's 100+ finishing and software partners.

Your workflow opportunity

If you're in the print production business, you already have a workflow. The question is, "is your workflow working for you?"

If you're ready for the answer, contact your Xerox representative to arrange for a workflow assessment, the first step toward identifying how your workflow can be optimized to accelerate your performance.

FOR ADDITIONAL INFORMATION

Visit the Xerox website for additional information about Xerox FreeFlow Digital Workflow Collection at www.xerox.com/freelflow.