

Print Manager:
Control printing
from a single
viewpoint.



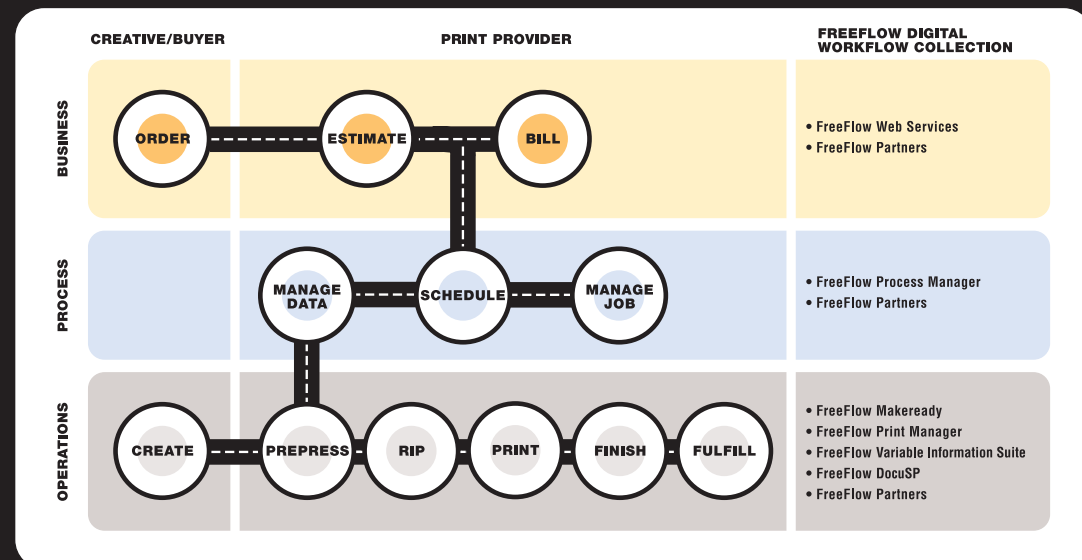
Xerox FreeFlow™

Performance Accelerated.

Print service providers in all markets, as well as in-plants, are under constant pressure to reinvent their processes, operations, and offerings. It's a competitive world out there and you've got to be faster, better, and more responsive to your customers if you're going to come out on top. But how are you going to:

- Streamline disconnected work processes
- Automate many labor-intensive, repetitive steps
- Update existing systems and applications
- Take advantage of new digital printing technologies
- Answer the call for faster, shorter runs of the highest quality documents.

Workflow can be thought of as the process of managing print production jobs from creation through invoice. Whether you're in an offset environment, digital, or some combination, workflow is everything you're doing right now to move jobs through your enterprise. Xerox FreeFlow solutions streamline your workflow and offer true interoperability among systems, applications, and printers so you can work the way you've always worked—only better.



FreeFlow is a platform that enables our customers to realize the vision of the "New Business of Printing." FreeFlow is built on industry leading *products*, complemented by business *partner* products, based on open industry *standards* and implemented with *services*.

PRODUCTS. PARTNERS. STANDARDS. SERVICES.

FreeFlow is based on four key elements:

PRODUCTS

A growing collection of Xerox software and hardware solutions that impact and improve nearly every aspect of workflow in the print production space.

PARTNERS

100+ industry leaders that collaborate with Xerox to provide solutions optimized for and fully integrated into the FreeFlow architecture.

STANDARDS

Open, industry-based standards, such as JDF, PDF, and XML that ensure interoperability and compatibility of FreeFlow products with existing workflows and equipment.

SERVICES

Workflow assessment, systems integration, application programming support, color management, and business development to support your workflow initiatives.

FREEFLOW PRODUCTS:

WEB SERVICES | MAKEREADY | PROCESS MANAGER | PRINT MANAGER | VARIABLE INFORMATION SUITE | DOCUSP®

A single point of control

You already run a successful printing operation. You may have both digital and offset equipment, or maybe you offer just digital printing.



But regardless of the nature of your equipment, you find yourself wishing you could monitor all of your printers from a single interface to better leverage all of your hardware to get the greatest return on your investment. Wouldn't it be great to find a way to make the most of all of your assets to increase productivity, shorten turnaround times, make less errors, and expand your business?

FreeFlow makes it possible.

FreeFlow Print Manager offers an integrated print manager/job ticketing workflow that provides you with a single point of access to your fleet of FreeFlow Print Manager-supported printers (includes FreeFlow DocuSP® and Creo digital front ends) to better manage jobs in a multiple engine environment. It greatly simplifies training your operators by employing an easy to use, consistent and customizable graphical user interface (GUI). It opens up new business opportunities with a highly productive demand reprint workflow. And when you're ready for JDF integration, Print Manager is ready too, with automatic JDF-enabled job ticketing.

Want to integrate your digital and offset workflow? FreeFlow Print Manager provides the ideal gateway from offset to digital printing with seamless integration of Xerox digital printers within your existing offset workflow. For example, you can access Print Manager for directing and submitting jobs to your digital presses using an offset prepress workflow or Web to print systems. Alternatively, Print Manager can acquire the job from the system and send it for printing.

Whether it's short run printing, Web to print, or printing from an offset workflow, FreeFlow Print Manager provides you with improved levels of workflow efficiency, reduced cost and waste, and opportunities for new revenue streams.

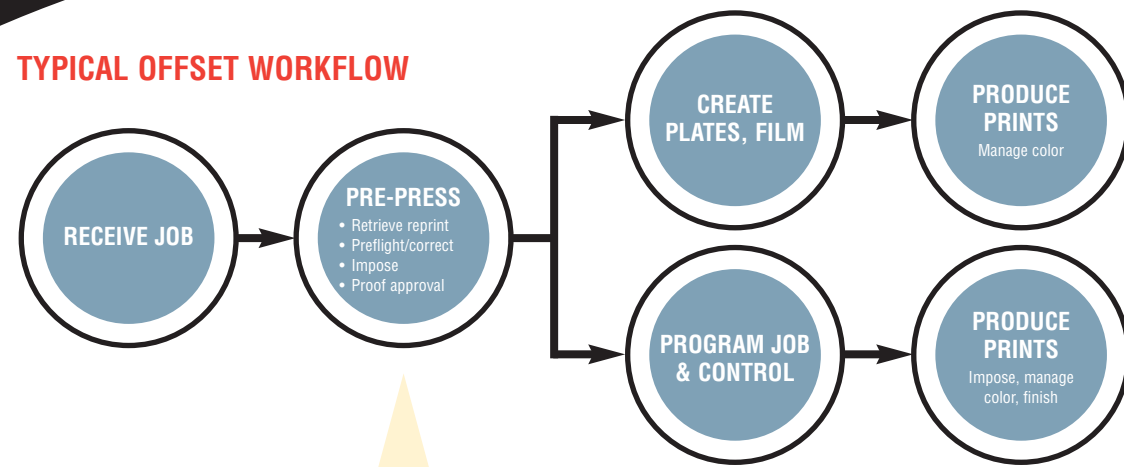
A 360° VIEW OF YOUR PRODUCTION

- Remotely access all of your digital printers to perform remote job submission and demand reprint, and monitor all FreeFlow Print Manager-supported monochrome and color printers.
- Automatically query your print systems for capabilities to ensure job ticket compatibility.
- Reduce job programming complexity by using the same processes for all FreeFlow Print Manager-supported printers.
- Quickly train operators on viewing, ticketing, and overseeing digital print operations.
- Identify production print attributes, such as covers, exception pages, and media.
- Direct jobs to the most appropriate or available digital printer.
- Reprint jobs with little or no job ticketing requirements.
- Develop custom GUIs for faster, easier production.



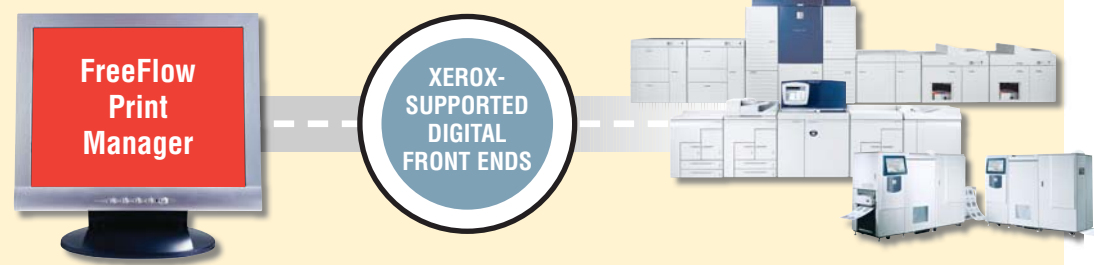
More opportunity, more jobs... one point of access

TYPICAL OFFSET WORKFLOW



GO DIGITAL FROM ANYWHERE

FreeFlow Print Manager allows you to integrate any workflow into a Xerox digital print environment and submit jobs via offset prepress software or FreeFlow Web Services.

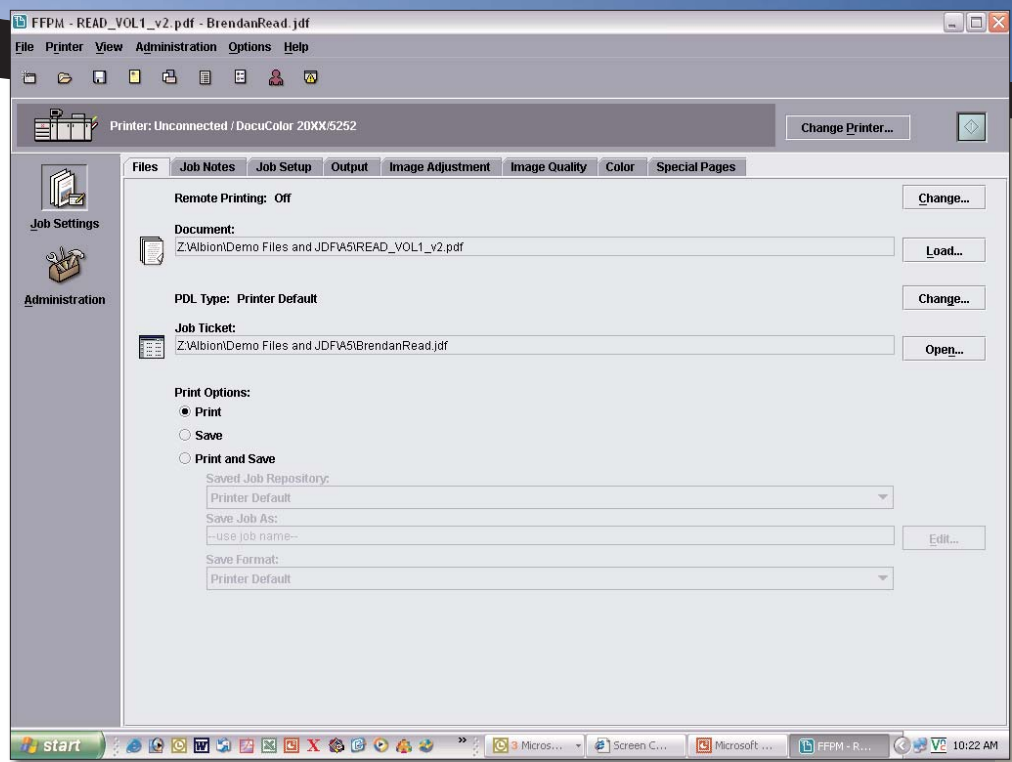


Production Color, Production Monochrome, Highlight Color, and Continuous Feed printers



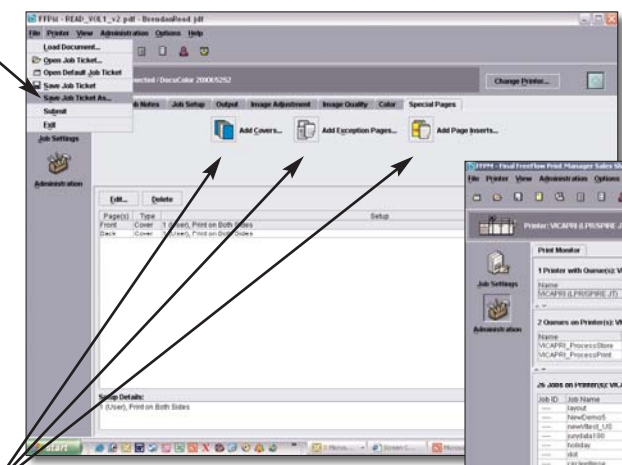
FREEFLOW WEB SERVICES

Customers can submit new jobs, place reorders, or status their jobs through any Web browser.



Remotely program, view, and monitor jobs and printers

SAVE JOB TICKET in Xerox production printing or JDF format.



VIEW AND SPECIFY FULL PRODUCTION PRINTING JOB ATTRIBUTES, including covers, inserts, and mixed media.

COMPLETE JOB TICKETING SYSTEM*

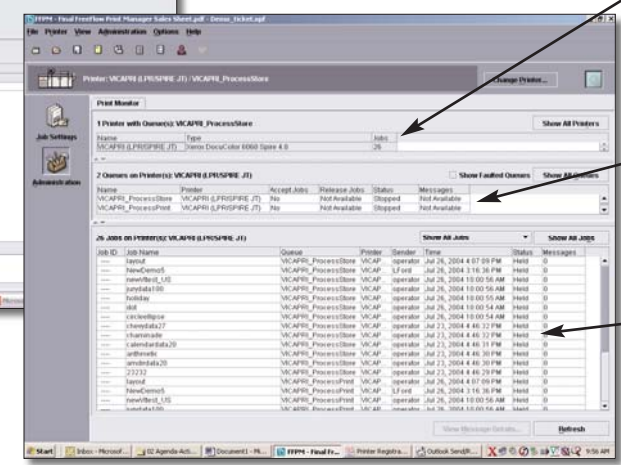
- Load files and existing tickets
- Identify copy count, page range, and size imaged
- Choose available stocks
- Program finishing options (collation, slip sheets, stapling, stacker tray)
- Shift and rotate images
- Program anti-aliasing
- Adjust resolution
- Set tone reproduction curves
- Print grayscale
- Adjust lightness, contrast, and saturation
- Setup and apply trapping
- Choose black overprint
- Adjust color cast
- Add covers and exception pages

* Some features listed are not available in all printing systems.

MONITOR PRINT QUEUES to identify jobs in process.

CHECK PRINTER STATUS and availability.

CHECK JOB STATUS.



Bringing it all together

NEW WORKFLOWS BRING NEW OPPORTUNITIES

It's inescapable—digital printing offers you increased opportunity to take in complex, short run jobs and do them productively and profitably. But the efficiency of your workflow can make the difference between modest success and maximum revenues, profit, and cost reduction. Whether your operation is strictly digital or you have a mix of offset and digital devices, FreeFlow Print Manager can integrate with your existing workflow and provide you with a streamlined, cost-effective approach to programming and producing digital jobs. Run your digital print operations from your prepress or anywhere else you choose. Manage your workflow in the way that makes the most sense to you. Expand your growth with digital printing. And let FreeFlow help you bring it all together.



TECHNICAL SPECIFICATIONS

FREEFLOW PRINT MANAGER INCLUDES:

- Print Manager (single user license)
- Printer Registration
- Xerox Job Ticket Converter

MINIMUM SYSTEM REQUIREMENTS:

PC WORKSTATIONS:

- Microsoft Windows 2000/XP—or—Red Hat Linux, kernel version 4.4.25 or greater
- Intel Pentium III 400MHz processor or greater
- 20MB of available disk space
- CD-ROM drive
- Internet Explorer version 5.5 or higher

MACINTOSH WORKSTATIONS:

- OS X version 10.2.6 or greater
- PowerPC G3 processor or greater
- 20MB of available disk space
- Macintosh Java Runtime Engine (JRE) version 1.4.1 or higher
- CD-ROM drive
- Safari version 1.0 or later

SUN WORKSTATIONS:

- Sun Solaris version 2.8 or later
- Sun SPARC workstation
- 20MB of available disk space
- CD-ROM drive
- Netscape version 6.2 or higher

Print engines to power your workflow

Print engines that can deliver the speed, image quality, reliability, and overall productivity that you need all day, every day are critical to your successful workflow. The fleet of Xerox production printers is designed to meet the challenges of your unique environment and to integrate seamlessly with FreeFlow solutions, opening doors to new opportunities and accelerating your performance like never before.

PRODUCTION COLOR

- iGen3™ Digital Production Press
- DocuColor® 8000 Digital Press
- DocuColor® 6060™ Digital Color Press
- DocuColor® 5252 Digital Color Press



PRODUCTION MONOCHROME & HIGHLIGHT COLOR

- Nuvera™ Digital Production System
- Nuvera™ Digital Copier/Printer
- DocuPrint® 92C Printer
- DocuTech® 61xx Production Publishers
- DocuPrint® Enterprise Printing System (EPS)
- DocuTech® 75/90 Publishers
- DocuPrint® 75/90 Production Printers



CONTINUOUS FEED

- DocuPrint® 425/850 Continuous Feed Printers
- DocuPrint® 500/1000 Continuous Feed Printers
- DocuPrint® 525/1050® Continuous Feed Printers



WIDE-FORMAT

MONOCHROME:

- 510 Copy System
- 6030/510 Wide Format Solutions
- 721 Copy/Print Systems

COLOR:

- 8142 Wide Format Printer
- 8160 Wide Format Printer



FreeFlow digital workflow Collection



The FreeFlow Digital Workflow Collection can be tailored to meet the unique challenges of your production print environment and streamline your workflow...



to accelerate your performance.

- **FreeFlow Web Services software** provides a Web storefront for your customers to submit new jobs and reorder existing ones in a secure environment from virtually anywhere. Jobs are quickly and easily transitioned into production or into other FreeFlow services, reducing errors and simplifying the fulfillment process.
- **FreeFlow Makeready software** streamlines your complex, labor-intensive make-ready operations with robust, sophisticated resources in a WYSIWYG environment. Makeready provides document assembly, document editing, production make-ready, and Adobe PDF review/approval.
- **FreeFlow Process Manager software** simplifies your application workflows by automating your prepress activities while providing you with the flexibility to modify workflows as needed. You maintain consistency and high quality across similar jobs, perform routine tasks, and reduce errors across the board.
- **FreeFlow Print Manager software** offers integrated print management and full job ticketing. It also provides a single point of access to all of your FreeFlow Print Manager-supported printers, as well as a highly productive demand reprint workflow, new revenue opportunities, and JDF-support.
- **FreeFlow Variable Information Suite software** gives you the power to turn variable data and images into variable documents—from colorful one-to-one marketing communications to fully formatted electronic customer statements. And because of the VIPP® variable data workflow, you can produce personalized communication and promotional transactional documents at rated speeds.
- **FreeFlow DocuSP® print controller** is an intuitive, easy-to-use digital front end that serves as a common interface to deliver productivity advantages to the entire monochrome and full-color Xerox digital printer product line.
- **FreeFlow Partner Products** are an important part of the FreeFlow Digital Workflow Collection. When you implement a FreeFlow solution, you're benefiting from all the experience and expertise of Xerox and the specialized knowledge of Xerox's 100+ finishing and software partners.

Your workflow opportunity

If you're in the print production business, you already have a workflow. The question is, "is your workflow working for you?"

If you're ready for the answer, contact your Xerox representative to arrange for a workflow assessment, the first step toward identifying how your workflow can be optimized to accelerate your performance.

FOR ADDITIONAL INFORMATION

Visit the Xerox website for additional information about Xerox FreeFlow Digital Workflow Collection at www.xerox.com/freeflow.