

PRINT

COPY



Imagine...
more time... more powerful tools...
a better way to work.



Move forward and *greet the future.*

Who wouldn't want to save money, improve productivity, and make work simpler for everyone in the organisation?

The new WorkCentre Pro 421 Series lets you do just that. With four models and a variety of features, you have the freedom to choose the solution that's exactly right for your business. But no matter which WorkCentre Pro 421 model you choose, you can be sure your business will benefit from tangible, measurable results.



Xerox WorkCentre Pro 421

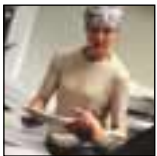
The next step in digital copying.

The WorkCentre Pro 421 Series provides easy-to-use digital features that optimise the capture of text, graphics, and photos to deliver crisp, clean, high resolution copies.

The 421 Series also delivers much more than basic functionality. It puts effortless booklet creation, two-sided copying, two-up copies, annotation, page numbering, and electronic pre-collation at your fingertips.

Plus, you can add printing functionality to your WorkCentre Pro 421 copier quickly and easily via the standard parallel port.

So when your needs grow, the 421's functionality can grow with you.



Copy

Give your hardcopy a new, digital life



Network Printing

Robust, efficient printing for a wide variety of network environments



copy

The WorkCentre Pro 421 comes loaded with features that truly make a positive impact on your office's productivity.

- A large paper capacity ensures uninterrupted productivity.
- A standard 100 sheet bypass tray can be designated for special papers, leaving main trays free for everyday use.
- A load-while-run feature allows you to load paper while the machine is still running.
- The auto-tray-switching feature means the engine pulls paper from another tray when the first one is empty.
- A full-sized document platen enables copying of bound and irregular shaped originals with ease.
- An Automatic Document Feeder produces fast and easy copies.



print



High performance printing.

The WorkCentre Pro 421Pi offers tremendous printing flexibility. Its ability to connect to all major network environments means you get up and running with ease... and that's only the beginning of its advantages:

- Xerox technology ensures consistent, reliable high-quality printing power.
- 80 MB of standard print memory maintains speed even with large documents.
- PCL6 and PostScript 2 lets you enjoy advanced printing features.
- Capabilities like two-sided printing and N-up prints improve productivity while reducing paper waste.

- An embedded Web page uses a PC browser to monitor print status. This allows the network administrator to better support the office's printing needs. Leveraging the Internet to print remotely to the WorkCentre Pro 421 greatly improves end-user convenience and supports an ever-growing mobile workforce.

Work faster.

At 20 pages per minute, production speed is only one of the benefits the WorkCentre Pro 421 Series offers. Digital features like producing multiple sets from a single-pass scan (scan-once-print-many) translates into more work being generated in less time. And with the electronic pre-collation feature, no one in the office will ever have to waste another minute on manual sorting.

With the WorkCentre Pro 421 Series, you can spend your time on the tasks that are core to your business – not on document production.

Less is more.

Consolidating copy and print resources into a single WorkCentre Pro multifunction system cuts operating costs, reduces the amount of office space required for housing equipment and simplifies machine maintenance and consumable purchase.

*Reliability you can count on.
Xerox WorkCentre Pro multifunction systems are reliable digital devices. Fewer moving parts mean less downtime and greater productivity.*



For more information on how the Xerox WorkCentre Pro 421 can help increase your office productivity, contact your Xerox Representative or visit our Web site at www.xerox.com



Xerox WorkCentre Pro 421

MULTIFUNCTION SYSTEM

Specifications

Configurations

WorkCentre Pro 421E: Simplex copier with a single 550 sheet paper tray, bypass tray and simple stand

WorkCentre Pro 421DE: Simplex copier with Automatic Document Handler, single 550 sheet paper tray, bypass tray and stand

WorkCentre Pro 421DEi: Duplex copier with Duplex Automatic Document Handler, single 550 sheet paper tray, bypass tray and stand

WorkCentre Pro 421Pi: Duplex printer-copier with Duplex Automatic Document Handler, two 550 sheet paper trays, bypass tray, offset catch tray and stand

Printer Specifications

Technology	Black and White Laser
Speed	20 ppm
Resolution	1200 x 600 dpi with Edge Enhancement Technology
Two-sided	Yes
Page Description Languages (PDL)	PCL6 (PCL 5e, PCL XL), PostScript 2 (emulation)
Print Drivers	Win 95/98/NT4.0/2000/Me/XP
Print Memory	80 MB
Connectivity	10/100BaseT
Network Protocols	TCP/IP, IPX, IPP, DHCP, LPR, SNMP, HTTP, Rawport 9100
Network Operating Systems	Novell NetWare v.3.x, 4.x, 5.x Windows NT4.0, Windows 2000, Windows XP, IBM LAN Server 3.0, 4.0 (TCP/IP)
Printer Management Software	Xerox CentreWare DP (Novell NetWare 3.x, 4.x, 5.x), NDPS, Microsoft Management Console, Web-Based/Internet Printing Support
Printing Features	Electronic Pre-Collation/Sorting, Different First Page, Separator Page, Watermarks and N-up

Copier Specifications

Speed	20 ppm (A4/210 x 297 mm) 13 ppm (B4/250 x 353 mm) 11 ppm (A3/297 x 420 mm)
Resolution	600 x 600 dpi
First Copy Out	Less than 8 seconds
Two-sided	Yes (421DEi and 421Pi only)
Reduce/Enlarge Settings Levels	Auto plus 5 pre-programmed 25% to 400% in 1% increments from platen 50% to 200% in 1% increments from document handler
Productivity	Scan-once-print-many, Electronic Pre-Collation
Copy Memory	32 MB standard, 160 maximum
Multiple Copies	1-999
Image Controls	Text, Text/Photo, Photo, Toner Saver
Edge Deletion	4 mm
Original Size Detection	Automatic
Digital Copying Features	Edge Erase, Build Job, Bound Original, Two-up, Job Store, Booklet Mode* (421DEi and 421Pi only), Annotation and Image Shift

Direct connect printing available on copier configurations only
*Extra memory required

Media Handling

Input Paper Capacity	
Standard Trays	550 sheets each
Bypass Tray	100 sheets
Paper Size	A3 to A5/297 x 420 mm to 148 x 210 mm
Paper Weight	
Standard Trays	60 to 90 gsm
Bypass Tray	60 to 163 gsm
Document Handler	
Simplex	50 sheets (80 gsm)
Duplex	100 sheets (80 gsm)
Output Capacity	
Centre Tray	500 sheets
Offset Catch Tray	250 sheets

General

Dimensions (WxDxH)	
WorkCentre Pro 421E	801 x 577 x 1039 mm
WorkCentre Pro 421DE	801 x 577 x 1127 mm
WorkCentre Pro 421DEi	801 x 577 x 1168 mm
WorkCentre Pro 421Pi	801 x 577 x 1168 mm
Weight	
WorkCentre Pro 421E	69 kg
WorkCentre Pro 421DE	73 kg
WorkCentre Pro 421DEi	85.5 kg
WorkCentre Pro 421Pi	93.5 kg
Power	220/240V, 50/60 Hz, 5.6 amps
Power Consumption	
Maximum	1410 watts
Standby	30 watts
Energy Saver Mode	3.8 watts
Operating Environment	
Temperature and Humidity	
<i>Maximum Range</i>	10° to 29°C @ 80% RH/ 50° to 84°F @ 80% RH 10° to 33°C @ 60% RH/ 50° to 92°F @ 60% RH
<i>Recommended Range</i>	15° to 25°C @ 70% RH/ 59° to 77°F @ 70% RH

Supplies

Approximate Yield	
Toner Cartridge	7,500 pages @ 6%* document coverage
Drum Cartridge	30,000 pages

*Starter cartridge (421E only) yield 2,000 prints @ 6%.

Agency Approvals

Safety	TUV (GS MARK), IEC60950 (CB) (EN60950), IEC60825 (EN60825)
---------------	--

Options

Copy Memory	2 x 64 MB upgrade (160 MB maximum)
--------------------	------------------------------------

For more information, please visit our Web site or call:
United Kingdom & Eire Tel: 0870 241 3245



Configuration availability may vary by location.
© 2002 Xerox Corporation. All rights reserved. Xerox®, The Document Company®, the digital X® and WorkCentre® are trademarks of XEROX CORPORATION. In support of Xerox's environmental leadership goals, the Xerox WorkCentre Pro 421 may contain some recycled components that are reconditioned. Windows, Windows NT and Windows 2000 are trademarks of Microsoft Corporation. PostScript® is a trademark of Adobe Systems, Inc. Novell® and NetWare are trademarks of Novell Corporation. Whilst this information is correct at the time of going to press, Xerox Europe reserves the right to change specifications of the equipment described herein without notice. 06/02

421BR-01EA