

Xerox DocuColor  
7000/8000,  
7000AP/8000AP  
Digital Presses  
Automated Colour  
Quality Suite



The Xerox DocuColor®  
7000/8000, 7000AP/8000AP  
Automated Colour Quality Suite  
Consistent Colour ...  
Automatically



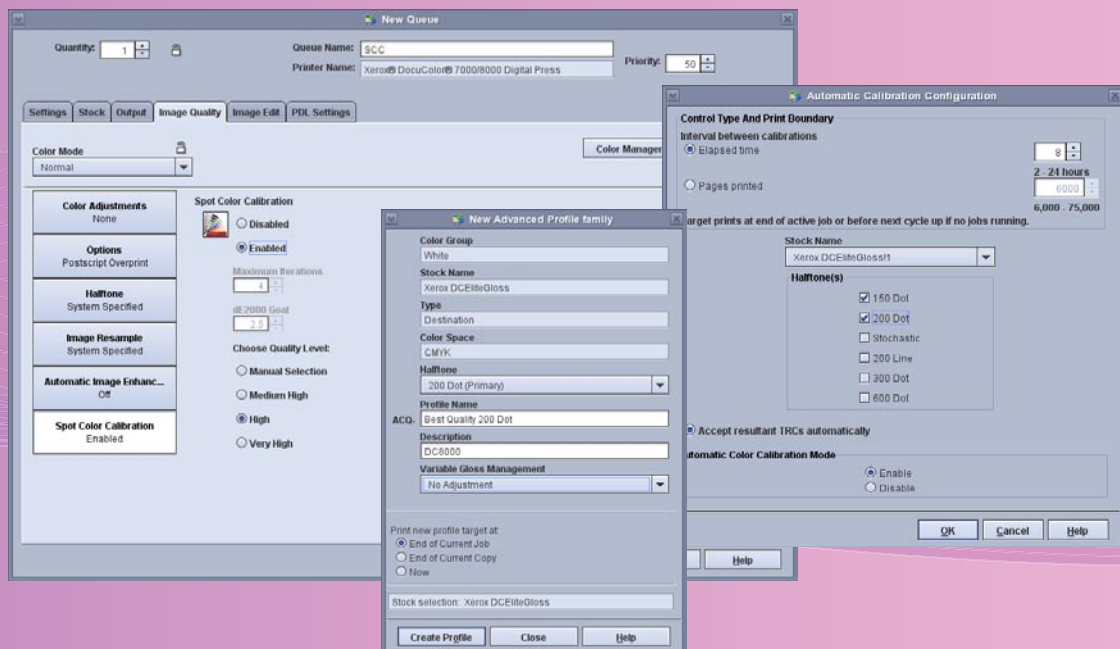
**Automating colour quality processes helps to increase production time and to ensure that colour quality is maintained on a consistent basis.** As print shops streamline their workflows and look for ways to maximise their productivity, they want more and expect more automation of their colour management processes as well as the rest of their business.

Whether a job is printed one time on one device or multiple times on multiple devices, over a short or extended period of time, colour consistency is critical to the printing process. Shops have at their disposal various tools to assist in achieving colour repeatability. Since using these tools takes time and may require considerable expertise, operators may either delay colour maintenance tasks to reduce production downtime or neglect to perform manual colour quality tasks altogether. By automating these processes, shop management can have increased confidence that colour maintenance will get done.

### Delivering Automation

The Automated Colour Quality Suite (ACQS) uses an internal spectrophotometer that is integrated into the paper path to avoid tedious and time-consuming tasks. ACQS automatically generates the colour patches on the target sheets, registers (aligns) the sheets so the patches are read accurately, processes the data and takes the appropriate action. The targets run at the rated speed of the DocuColor 7000/8000 or 7000AP/8000AP.

**ACQS consists of modules for Advanced Profiling, Automated Colour Calibration and Spot Colour Calibration.** Together they enable “Default Colour Output.” With ACQS, the shop achieves excellent quality almost effortlessly, even with inexperienced operators, using standard settings and automated processes.



\*Xerox® FreeFlow® Print Server 7.0  
minimum release level



## Advanced Profiling

Advanced Profiling creates a superior, custom ICC-compliant Destination Profile for colour critical applications such as photos that require a high degree of colour accuracy and detail as well as a pleasing appearance.

**All at the touch of a button.**

## Productivity

- Matches the DocuColor to other presses in your shop usually on the first try.
- Yields improved colour consistency between machines and over time on one machine.

## Colour Quality

- Provides outstanding colour accuracy.
- Emulates industry colour standards such as GRACoL and ISO.
- Results in better neutrals, shadow and highlight detail, and photo rendering.

## Variable Gloss Management

- Optionally adjust the image rendering for the preferred level of glossiness and overall appearance.
- A Variable Gloss Management Profile created with ACQS is optimised for each specific printer, halftone (dot) and stock (if desired).

## Spot Colour Calibration

Customers running applications such as marketing collaterals and direct mail are sensitive to spot colour consistency and, for many, repeatability is as critical as or even more important than accuracy. Accurate and consistent Spot Colours are also important for catalogues, business cards and design documents.

**Simple to set up.**

## Productivity

- Much faster than the manual procedure, which depends on visual, subjective assessment.
- Enables manufacturing environment (quantitative measurement against a desired goal).
- Saves 35-40 min. on average per job (based on 3-5 spot colours per job).
- Can run automatically.
- Faster time-to-press.

## Colour Quality

- Delivers accurate colour with no special colour knowledge or skill.
- Will hit the correct colour for Pantone coated callouts.
- Improves colour repeatability on the same machine and across machines.

## Automated Calibration

The ACQS inline spectrophotometer automates a critical element of colour management – press calibration. It can be set to run automatically on a schedule eliminating the problem of busy operators forgetting to calibrate.

**Totally “hands free”.**

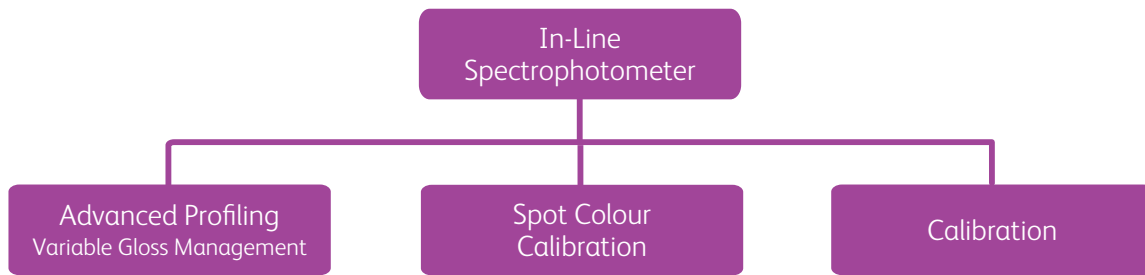
## Productivity

- Eliminates mistakes due to human error or mis-feeds when calibrating manually (no separate feeding of calibration charts).
- Reduces non-productive printer time and facilitates job turnaround.
- Can be scheduled to run automatically at the next job boundary after so many elapsed hours or printed pages.
- Eliminates colour variation because operators forget to calibrate or calibrate off-schedule due to workload.

## Colour Quality

- Performs automatic white balance calibration (of the spectrophotometer) to ensure that the sensor always returns accurate results.
- Maintains the accuracy of Advanced Profiles and Spot Colour Calibration.

# One Spectrophotometer, multiple productivity enhancements



## Advanced Profiling

Using the inline spectrophotometer, ACQS will automatically print target sheets, measure how closely they match a selected industry standard and generate a profile for the DeviceLink workflow, all on the press. The quality of photos, both RGB and CMYK, is significantly improved with the use of Advanced Profiling.

## Spot Colour Calibration

Spot Colour Calibration (SCC) colour-corrects spot colours to official (Pantone® licensed) reference values, within a user-specified level of quality. No other tool is as effective at correcting saturated spot colours. SCC automatically reads print engine data and modifies the CMYK recipe for each spot colour to minimise the colour difference with the reference value.

## Automated Calibration

Colour can vary for a variety of reasons including temperature fluctuations, humidity changes and general day-to-day use. Calibration, which sets grey balance, is required to return the print engine to the expected state. Automated Calibration is accomplished in about two minutes per halftone (line screen) – saving ten minutes compared to manual calibration.

For more information on the Automated Colour Quality Suite, Contact your Xerox representative today or call 0800 787 787.



Printed on a Xerox DocuColor® Digital Production Press on Xerox® Digitally Optimised Paper.

©2008 Xerox Corporation. All rights reserved. Xerox®, the sphere of connectivity design, FreeFlow®, and DocuColor® are trademarks of Xerox Corporation in the United States and/or other countries. PANTONE® is a trademark of Pantone, Inc. 10/08

708P89377GBE