



Kodak Polychrome Graphics
Matchprint Professional Server

Ideas made real Colours made true



Xerox DocuColor® 12 and the Kodak Polychrome Graphics Matchprint Professional Server: bringing colour confidence to your proofing and printing



If you're a graphic artist, you're probably tired of telling clients, "Don't look at this for colour" and presenting colour comps that don't accurately reflect your intended design. Likewise, if you're a print professional facing a fast-approaching deadline, a quick, colour-accurate proofing and printing solution could make a world of difference. If colour is critical to you, turn to the Kodak Polychrome Graphics Matchprint Professional Server. It's a true colour breakthrough that will revolutionise the way you work!

Legendary MatchPrint proofing accuracy made easy

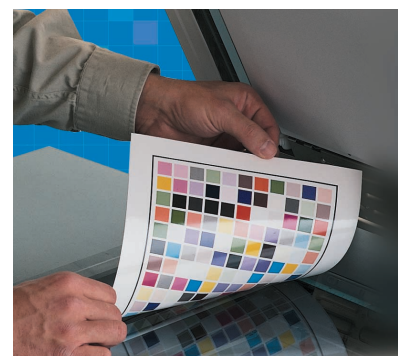
With the Matchprint Professional Server and the Xerox DocuColor 12 Printer-Copier you can produce in-house colour proofs accurate to the trusted Matchprint proofing standard, delivered on our exclusive co-branded Colour Laser Proofing Papers. Your output will simulate all the colour intricacies of the final printed piece, so you can amaze your clients and avoid last-minute changes and expensive colour rework - while generating valuable new revenues! With Kodak Polychrome Graphics' colour management technology at work, the traditional problem areas (flesh tones, foods, PANTONE® spot colours, gradations, etc.) are handled with ease. And, while you'll treasure its colour accuracy, your team will also appreciate this server's operational simplicity.

Its breakthrough interface software gives you:

- Fast RIP times
- Quick, simple calibration using our three-step Colour Locking technology - ensuring consistent output on a variety of media
- Support for today's most popular graphic arts file formats (PDF, etc.)
- Tools useful in your production workflow, such as:
 - Automated centring for image files placed in hot folder
 - Automated random proofing using a hot folder
 - Custom page sizes
- Management tools such as:
 - Secure client-server interface
 - Job accounting allowing for tracking and billing of proofs

In addition to standard Matchprint colour sets and Kodak Approval Digital Halftone Proofing System simulations, our server supports other popular colour-set simulations, including:

- DuPont Waterproof Proofing System
- Fuji ColorArt Proofing System
- TR001



Pantone-licensed
spot-colour simulations



Short-run printing that's long on colour accuracy

In addition to unmatched colour proofing, the Matchprint Professional Server makes in-house, short-run printing with true colour accuracy



possible for the first time. By partnering this server with the Xerox DocuColor 12 and using approved media, you can expand your company's capabilities and revenue potential, adding a whole new service offering and delivering even more value to your clients. How? Matchprint colour technology and interface software make it easy before, during and after you print! You'll get accurate, repeatable colour - from output to output, run to run, even week to week - with:

- Fast processing times for greater productivity
- A smart user interface that allows you to:
 - Prioritise and manage jobs at queue

- Change file output parameters at RIP for reprint
- Apply pre-defined settings to new jobs
- Reprocess files from the job log
- Export jobs
- A job log, which lets you:
 - Track the job accounting number for charge-backs
 - Track the number of copies, pages, sets and reprints from the server
- Duplex alignment for accurate back-to-front registration
- Full job recovery
- Variable data support

Get accurate, consistent colour proofing - from concept to final output

With the unparalleled colour proofing accuracy provided by the Kodak Polychrome Graphics Matchprint Professional Server and Xerox DocuColor 12 Printer-Copier, you can improve your timelines *and* your bottom line. Here are just some of the ways that this revolutionary new colour solution can help you save costs, generate new revenues and enhance your workflow.



PRINTER-COPIER SUPPORTED

- Xerox DocuColor 12 Printer-Copier

CORE FEATURES

- **Output Resolution:**
600 x 600 dpi, 8 bit full continuous tone
- **Processor:**
1.9 GHz Intel Pentium 4
- **Memory:**
1GB
- **Hard Drive:**
36GB
- **Media Drives:**
CDRW-ROM 16/10/40
- **Server Workstation Components:**
15 " Flat Panel LCD Display
(1024 mm x 768 mm), Extended Keyboard
and 3-Button Mouse
- **Operating System:**
Windows® 2000 Server Edition,
w/Service Pack 3
- **Page Description Language:**
PostScript® Level 3, PDF 1.4 Native
- **Options:**
Upright Server Stand (Black), External specified
spectrophotometer for calibration

NETWORK MANAGEMENT

- **Connectivity:**
Ethernet: 10/100Base-T
- **Protocols:**
TCP/ IP, AppleTalk®
- **Print Drivers:**
Windows® 98/2000/XP,
Windows NT® 4.0, UNIX®
LPR/LPD, (no Win XP LPR support),
Macintosh® (OS 9 x OSX native)
- **Administration:**
Unlimited, customisable and scriptable (hot folder)
support, Unlimited, customisable (print queues)
spoolers, MPS Application (Roles Administration -
Guest, Operator, Administrator), Advanced
calibration management (warnings and queue
holds), Hot folder and spooler job
accounting/tracking

DOCUMENT MANAGEMENT

- **Imaging Features:**
RIP multitasking, Continual print, Reverse order
printing (N-1), Anti-aliasing (resolution enhancement),
Full screen and page-by-page job previews, Sharpening
- **Output Configurations:**
Collation, Automatic Duplexing, w/duplex alignment
adjustment, High-capacity Feeder, Stapling
- **File Support:**
PDF 1.4 (Acrobat® 5.0), w/password protection, PDF
separations (Auto-combine), TIFF/IT P1, TIFF, EPS,
Scitex™ CT, Photoshop® PSD including channels,
DCS 2.0 (Single File), PostScript
- **Fonts:**
136 PostScript Fonts

COLOUR MANAGEMENT

- **Separations Handling:**
In-RIP CMYK+ 12 channel separation, Pre-separated
file support, which includes PDF, Trap and overprint
proofing
- **Press Simulation and Colour Target Support:**
Matchprint certified professional proofing targets,
Matchprint custom colour library, Kodak Approval
proofing simulations, Fuji ColorArt proof simulations,
DuPont Waterproof® proof simulations, TR001 proof
simulations, PANTONE® coated and uncoated colour
libraries, Japanese press simulations, Newsprint
press simulations, Business Graphics, Short-run
Colour, Internet Colour
- **Colour Rendering and Conversions:**
Embedded KPG proprietary Colour Fidelity Module (CFM)
for advanced, custom colour simulations, Advanced
ICC source/ destination profile workflow integration
- **Calibration:**
KPG proprietary Colour Locking calibration
technology, Built-in scanner calibration in-put,
External spectrophotometer calibration (OPTIONAL)
- **Advanced Features:**
Customisable colour control bars, User-defined
custom colour sets, Colour and Grayscale target
editing tools for custom curve adjustment, Colour
workflow hot folder integration, Edit printer defaults
for job reprint from the job log, Named (Job Sets)
for direct, hot folder, and spooler administration,
Job Archive (individual file and entire workflow
automation), Remote Web viewing.



Kodak Polychrome Graphics
Matchprint Professional Server



XEROX

Worldwide Partner