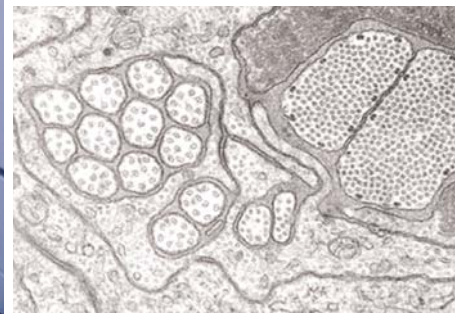




## DocuTech® ExcellencePlus Series

Enhance clarity and readability of line art, charts, and photographs with the use of coated paper.



## Coated Stock Capability



**Think it's time to call Xerox?**  
For more information call **0800 787 787** or  
visit us on the Web at: [www.xerox.co.uk](http://www.xerox.co.uk)

## DocuTech® ExcellencePlus Series with Coated Stock for DocuTech 6180 / 6155

### Overview

Support for Coated Stock is available as an option for the Xerox DocuTech® 6180 and 6155 ExcellencePlus Series (PowerPlus Series in North America). The Coated Stock capability enables commercial printers and corporate print shops to digitally print shortrun scientific, medical and technical manuals or other books typically employing coated stocks. These books contain detailed line art, charts, and photographs whose clarity and readability is enhanced with the use of coated paper. Other applications might include short run calendars, yearbooks, photo albums or reports.

Coated Stock is part of a suite of Digital Book production solutions from Xerox which enable publishers to keep titles in print indefinitely, reduce warehouse inventories to minimum levels, economically testmarket new titles and profitably publish a large catalogue of titles regardless of the number of copies sold. Printers who offer Digital Book manufacturing can empower publishers by providing them an economic process to manage their titles in every phase of the book cycle. Xerox Digital Book solutions automate the process of managing book production and improve the bottom line.

Recommended stocks include both matte and high gloss stocks from Xerox as well as other suppliers.

### DocuTech Models Supported

DocuTech 6180/6155

### Throughput Materials

#### Coated Stocks:

- Print simplex or duplex at rated speed.
- Maximum recommended cut-size coated stock is 318mm x 470mm.
- Coated stocks should be unprinted (i.e. not previously imaged).
- Customers are advised against the use of pre-printed shells for imaging purposes as they may contaminate the printer and/or compromise image quality.
- Capability is optimised for selected book stocks.

#### Non-Coated Stocks:

- All standard weight stocks approved for DocuTech 6180/6155 (60gsm to 200 gsm); will also run on an ExcellencePlus with the Coated Stock option.

Standard weight stocks will run in all of the same cut sizes that run on an ExcellencePlus which is not equipped with the Coated Stock capability.

### Recommended Coated Stocks

Performance has been validated only for stocks that are on the Coated Stock Recommended Media List (RML). Any stocks which are not included in the RML or which exceed the parameters for stock size must be tested to ensure satisfactory results. Coated stocks that have been approved for other Xerox monochrome and colour devices are not automatically compatible with the DT 6180/6155 and must be tested if they are not on the RML. Consult with your Xerox representative for specific enquiries.

Low or fluctuating Relative Humidity (RH) may adversely affect throughput.

### Paper Input Options

#### Trays supported:

- Tray 5:  
A4 up to 318mm x 470mm
- Tray 4:  
(interposer tray) will feed (post-fuser) stocks from Coated Stock Recommended Media List (RML) that have been pre-printed on a DocuColor® 5252/6060 or iGen3®.
- Tray 3:  
A4 up to A3

### Imaging

For maximum quality and consistency, printing should be a minimum of 13mm from the left or right edge of the paper. Please see the RML for additional details.

### Stacking

Coated Stocks can be output to a High Capacity Stacker model 2.

### Electrical

Both 50Hz and 60Hz machines are supported.

**Preliminary specifications; subject to change.**



Xerox (UK) Ltd.  
Bridge House  
Uxbridge  
Middlesex  
UB8 1HS  
0800 787 787  
[www.xerox.co.uk](http://www.xerox.co.uk)