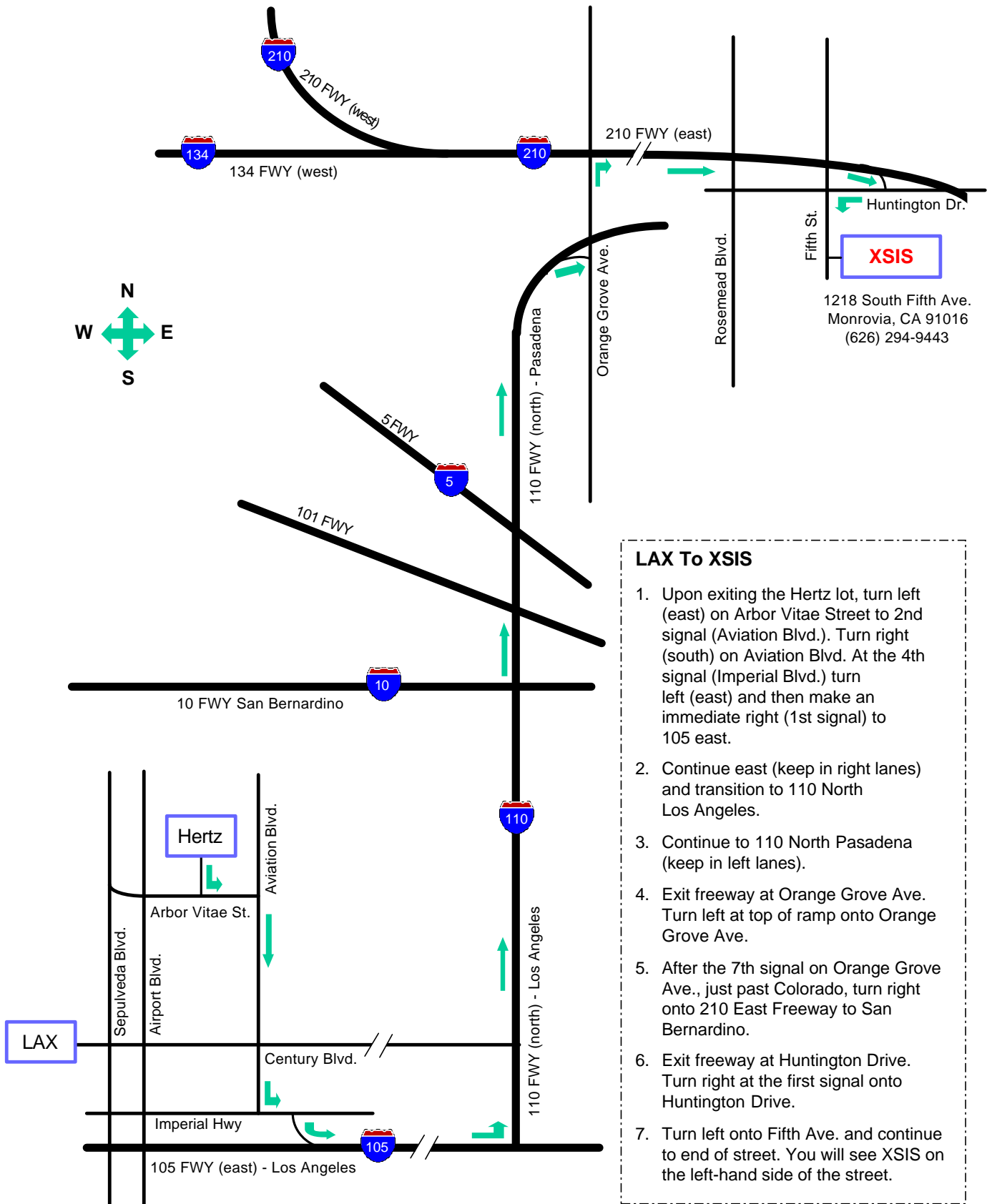


# LAX to XSIS

(May 16, 2001)



## LAX To XSIS

1. Upon exiting the Hertz lot, turn left (east) on Arbor Vitae Street to 2nd signal (Aviation Blvd.). Turn right (south) on Aviation Blvd. At the 4th signal (Imperial Blvd.) turn left (east) and then make an immediate right (1st signal) to 105 east.
2. Continue east (keep in right lanes) and transition to 110 North Los Angeles.
3. Continue to 110 North Pasadena (keep in left lanes).
4. Exit freeway at Orange Grove Ave. Turn left at top of ramp onto Orange Grove Ave.
5. After the 7th signal on Orange Grove Ave., just past Colorado, turn right onto 210 East Freeway to San Bernardino.
6. Exit freeway at Huntington Drive. Turn right at the first signal onto Huntington Drive.
7. Turn left onto Fifth Ave. and continue to end of street. You will see XSIS on the left-hand side of the street.

## NOTE:

Map is *not* to scale. Distance: approx. 34 miles

Travel time: approx. 1 to 1-1/2 hrs. (*depending on traffic*)